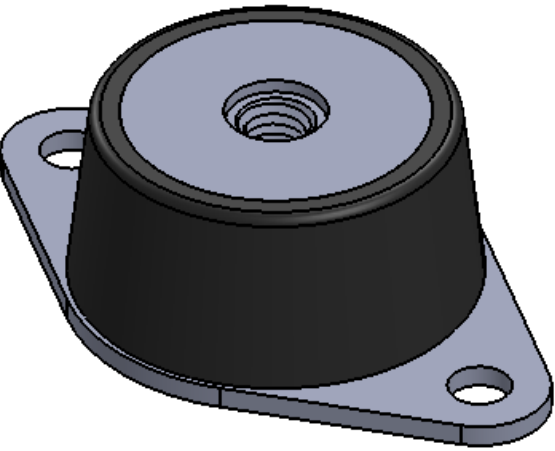


REVISIONS			
REV.	DESCRIPTION	DATE	APPROVED
1	INITIAL RELEASE OF DRAWING	9/1/2014	BS



NOTES:

- 1 MATERIAL: ELASTOMER AND DUROMETER OF 40, 50, 60 OR 70 TO BE SPECIFIED.
- 2 ALL DIMENSIONS ARE REFERENCE.
- 3 AVAILABLE WITH THREADS OF 3/8-16 UNC, 1/2-20 UNF AND M10 X 1.5.

SIGNATURE		DATE
DRAWN	B. SENEAL	09/01/2014
CHECK	S. BROWN	09/01/2014
ENGR	B. SENEAL	09/01/2014
QA		
STRESS		
APPR		

UNLESS OTHERWISE SPECIFIED:
DIMENSIONS ARE IN INCHES
TOLERANCES:
.X =
.XX = ± 0.031
.XXX =
ANGLES = $\pm 1^\circ$
INTERPRET GEOMETRIC
TOLERANCING PER:
ASME Y14.5M-1994

KARMAN RUBBER VIBRO-INSULATORS®	
FOR CONTROLLING NOISE, SHOCK & VIBRATION	
SIZE B	CAGE CODE
DO NOT SCALE DRAWING	

TITLE: K60 SERIES VIBRO-INSULATOR WWW.KARMAN.COM			
DWG. NO. K60		REV 1	
SCALE: 1:1	WEIGHT: 5.40 OZ.	SHEET 1 OF 1	

AR	ELASTOMER	K60-6	1	6
1	MK600-M10	MK600-M10		5
1	MK600B	MK600B		4
1	MK600A	MK600A		3
1	MK600R	MK600R		2
	K60	K60		1
QTY.	DESCRIPTION	PART NUMBER	MATERIAL OR NOTES	ITEM