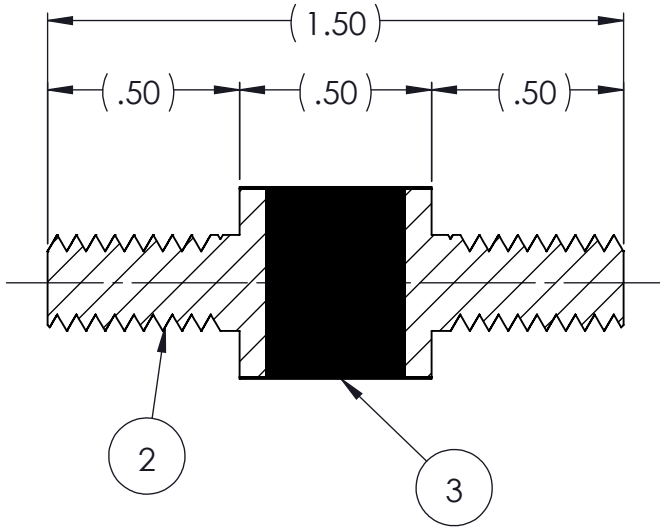
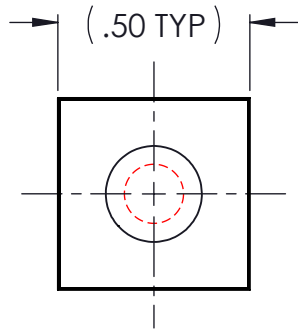
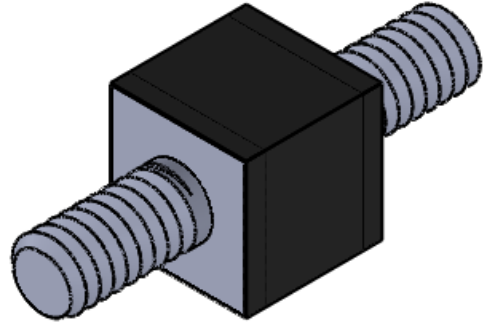


REVISIONS			
REV.	DESCRIPTION	DATE	APPROVED
1	INITIAL RELEASE OF DRAWING	5/30/2014	BS
2	ADD NOTE 3	8/15/2014	BS



NOTES:

- 1 MATERIAL: ELASTOMER AND DUROMETER OF 40, 50, 60 OR 70 TO BE SPECIFIED.
- 2 ALL DIMENSIONS ARE REFERENCE.
- 3 AVAILABLE WITH 1/4-20 UNC X 1/2" THREAD.

AR	DESCRIPTION	PART NUMBER	MATERIAL OR NOTES	ITEM
AR	ELASTOMER	S420-3		3
2	MS420	MS420		2
	S420	S420		1

PROPRIETARY AND CONFIDENTIAL THE INFORMATION CONTAINED IN THIS DRAWING IS THE SOLE PROPERTY OF KARMAN RUBBER. ANY REPRODUCTION IN PART OR AS A WHOLE WITHOUT THE WRITTEN PERMISSION OF KARMAN RUBBER IS PROHIBITED.	SIGNATURE		DATE
	DRAWN	B. SENEAL	05/30/2014
	CHECK	S. BROWN	05/30/2014
	ENGR	B. SENEAL	05/30/2014
	QA		
STRESS			
APPR			

UNLESS OTHERWISE SPECIFIED:
 DIMENSIONS ARE IN INCHES
 TOLERANCES:
 .X =
 .XX = ± 0.031
 .XXX =
 ANGLES = ± 1°
 INTERPRET GEOMETRIC TOLERANCING PER: ASME Y14.5M-1994

KARMAN RUBBER VIBRO-INSULATORS
 FOR CONTROLLING NOISE, SHOCK & VIBRATION

SIZE **B** CAGE CODE

DO NOT SCALE DRAWING

TITLE: S420 SERIES VIBRO-INSULATOR WWW.KARMAN.COM		DWG. NO. S420	REV 2
SCALE: 2:1	WEIGHT: .35 OZ.	SHEET 1 OF 1	