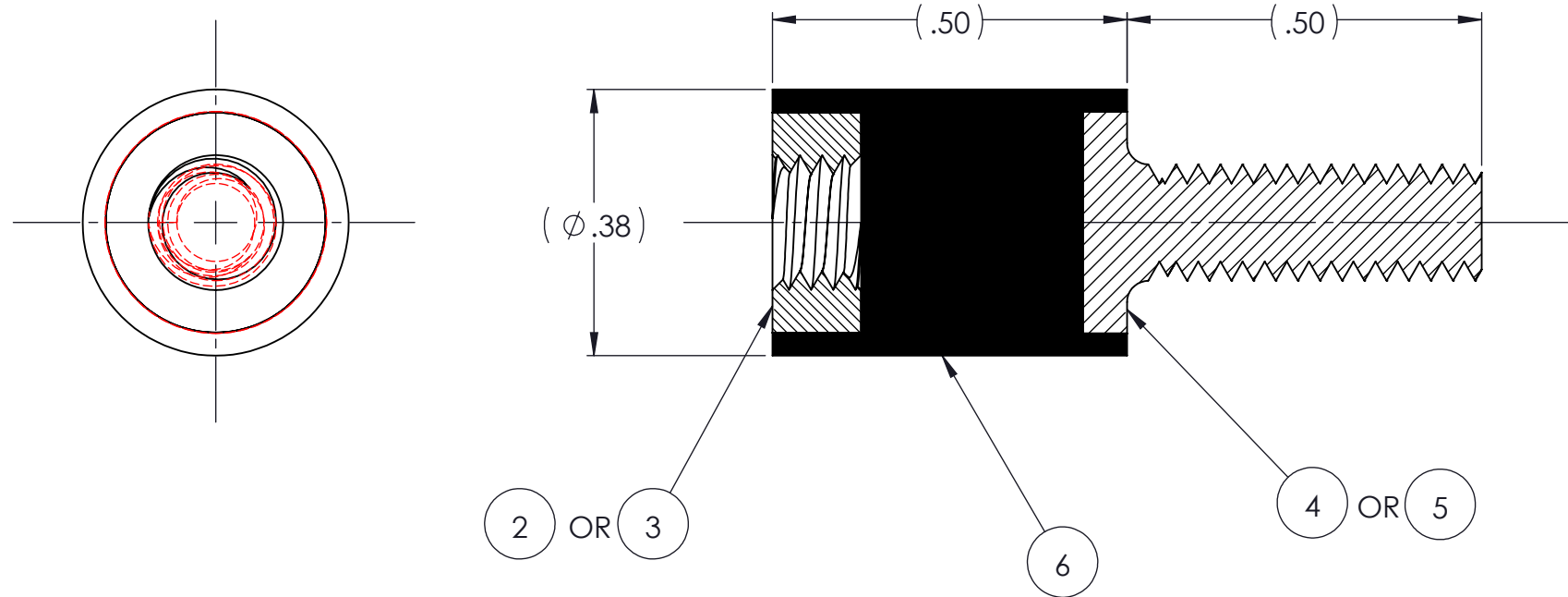
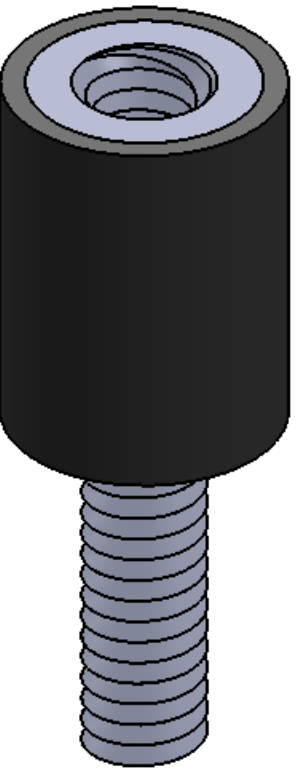


| REVISIONS |                            |           |          |
|-----------|----------------------------|-----------|----------|
| REV.      | DESCRIPTION                | DATE      | APPROVED |
| 1         | INITIAL RELEASE OF DRAWING | 8/29/2014 | BS       |



| AR   | ELASTOMER   | K81-6       |                   | 6    |
|------|-------------|-------------|-------------------|------|
| 1    | MK810-M4    | MK810-M4    |                   | 5    |
| 1    | MK810       | MK810       |                   | 4    |
| 1    | MK800-M4    | MK800-M4    |                   | 3    |
| 1    | MK800       | MK800       |                   | 2    |
|      | K81         | K81         |                   | 1    |
| QTY. | DESCRIPTION | PART NUMBER | MATERIAL OR NOTES | ITEM |

NOTES:

- 1 MATERIAL: ELASTOMER AND DUROMETER OF 40, 50, 60 OR 70 TO BE SPECIFIED.
- 2 ALL DIMENSIONS ARE REFERENCE.
- 3 AVAILABLE WITH THREADS OF 8-32 UNC X 1/2" AND M4 X .7 X 1/2".

| PROPRIETARY AND CONFIDENTIAL  | SIGNATURE | DATE       | UNLESS OTHERWISE SPECIFIED:                           |
|---|-----------|------------|---|
| <small>THE INFORMATION CONTAINED IN THIS DRAWING IS THE SOLE PROPERTY OF KARMAN RUBBER. ANY REPRODUCTION IN PART OR AS A WHOLE WITHOUT THE WRITTEN PERMISSION OF KARMAN RUBBER IS PROHIBITED.</small> | DRAWN     | B. SENECAI | DIMENSIONS ARE IN INCHES                              |
|   | CHECK     | S. BROWN   | TOLERANCES:   |
|   | ENGR      | B. SENECAI | .X =  |
|   | QA        |            | .XX = ± 0.031   |
|   | STRESS    |            | .XXX =  |
|   | APPR      |            | ANGLES = ± 1°   |
|   |           |            | INTERPRET GEOMETRIC TOLERANCING PER: ASME Y14.5M-1994 |



|   |           |                     |                              |
|---|-----------|---------------------|------------------------------|
| TITLE: K81 SERIES VIBRO-INSULATOR<br>WWW.KARMAN.COM |           |                     |                              |
| SIZE: <b>B</b>                                      | CAGE CODE | DWG. NO. <b>K81</b> | REV <b>1</b>                 |
| DO NOT SCALE DRAWING                                |           | SCALE: 4:1          | WEIGHT: .10 OZ. SHEET 1 OF 1 |