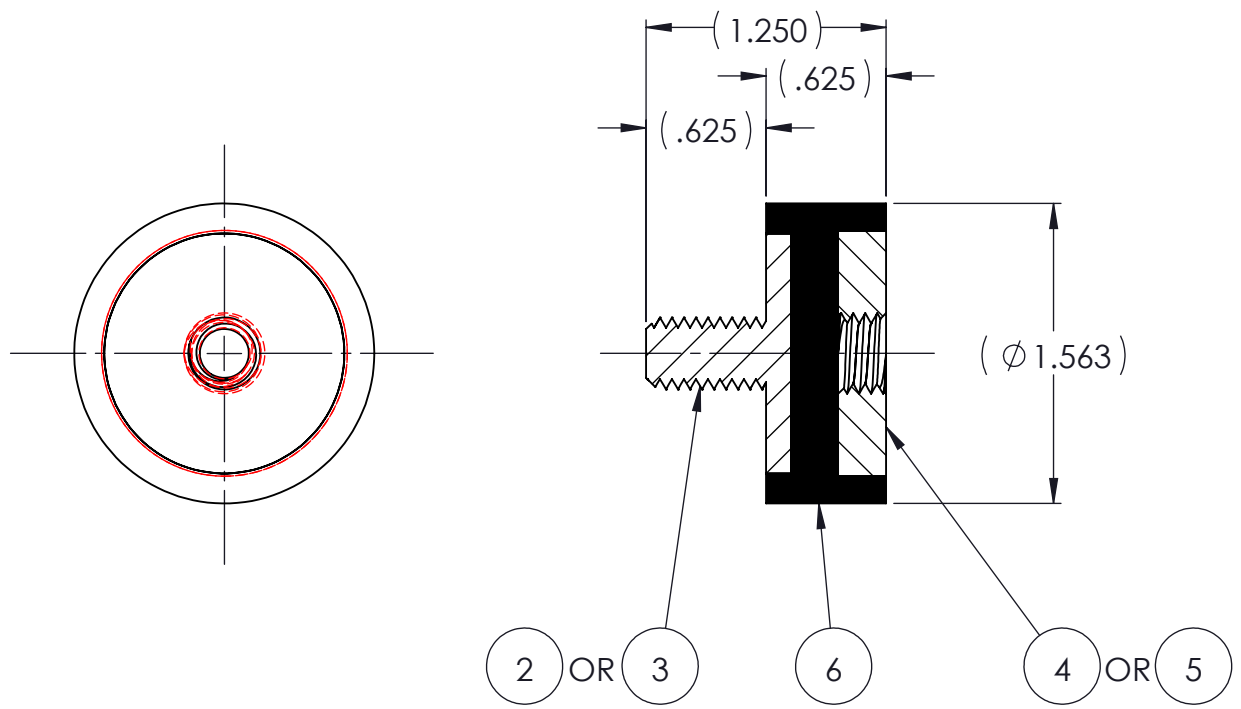
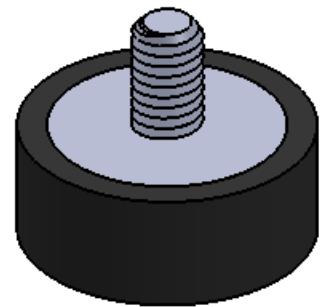


REVISIONS			
REV.	DESCRIPTION	DATE	APPROVED
1	INITIAL RELEASE OF DRAWING	12/22/2014	BS



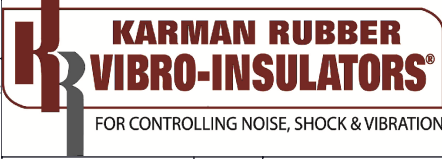
QTY.	DESCRIPTION	PART NUMBER	MATERIAL OR NOTES	ITEM
AR	ELASTOMER	K373-6	⚠	6
1	MK3750TW-M10	MK3750TW-M10		5
1	MK3750TW	MK3750TW		4
1	MK370-M10	MK370-M10		3
1	MK370-BB	MK370-BB		2
	K373	K373		1

NOTES:

- 1 MATERIAL: ELASTOMER AND DUROMETER OF 40, 50, 60 OR 70 TO BE SPECIFIED.
- 2 ALL DIMENSIONS ARE REFERENCE.
- 3 AVAILABLE WITH THREADS OF 3/8-16 UNC AND M10 X 1.5.

PROPRIETARY AND CONFIDENTIAL THE INFORMATION CONTAINED IN THIS DRAWING IS THE SOLE PROPERTY OF KARMAN RUBBER. ANY REPRODUCTION IN PART OR AS A WHOLE WITHOUT THE WRITTEN PERMISSION OF KARMAN RUBBER IS PROHIBITED.	SIGNATURE		DATE
	DRAWN	B. SENECAL	12/22/2014
	CHECK	S. BROWN	12/22/2014
	ENGR	B. SENECAL	12/22/2014
	QA		
	STRESS		
APPR			

UNLESS OTHERWISE SPECIFIED:  
 DIMENSIONS ARE IN INCHES  
 TOLERANCES:  
 .X =  
 .XX = ± 0.031  
 .XXX =  
 ANGLES = ± 1°  
 INTERPRET GEOMETRIC TOLERANCING PER: ASME Y14.5M-1994



TITLE: K373 SERIES VIBRO-INSULATOR WWW.KARMAN.COM			
SIZE: <b>B</b>	CAGE CODE	DWG. NO. K373	REV 1
DO NOT SCALE DRAWING	SCALE: 1:1	WEIGHT: N/A	SHEET 1 OF 1