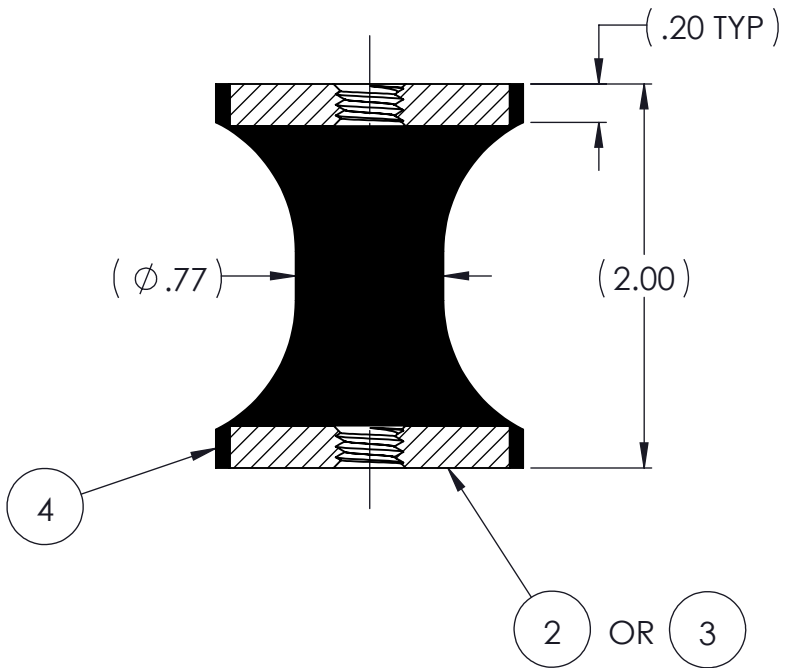
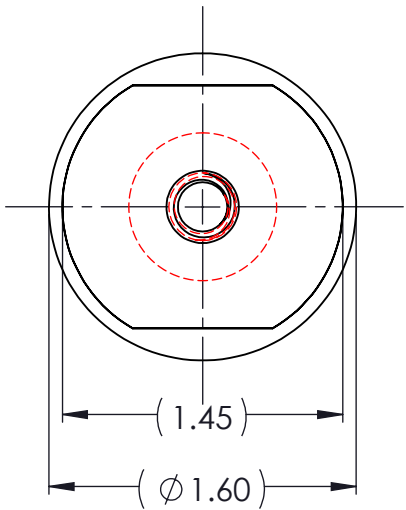



REVISIONS			
REV.	DESCRIPTION	DATE	APPROVED
1	INITIAL RELEASE OF DRAWING	9/25/2014	BS



NOTES:


- 1 MATERIAL: ELASTOMER AND DUROMETER OF 40, 50, 60 OR 70 TO BE SPECIFIED.
- 2 ALL DIMENSIONS ARE REFERENCE.
- 3 AVAILABLE WITH THREADS OF 5/16-18 UNC AND M8 X 1.25.

PROPRIETARY AND CONFIDENTIAL THE INFORMATION CONTAINED IN THIS DRAWING IS THE SOLE PROPERTY OF KARMAN RUBBER. ANY REPRODUCTION IN PART OR AS A WHOLE WITHOUT THE WRITTEN PERMISSION OF KARMAN RUBBER IS PROHIBITED.	SIGNATURE		DATE	UNLESS OTHERWISE SPECIFIED: DIMENSIONS ARE IN INCHES TOLERANCES: .X = .XX = ± 0.031 .XXX = ANGLES = ±1° INTERPRET GEOMETRIC TOLERANCING PER: ASME Y14.5M-1994
	DRAWN	B. SENEAL	09/25/2014	
	CHECK	S. BROWN	09/25/2014	
	ENGR	B. SENEAL	09/25/2014	
	QA			
	STRESS			
	APPR			



FOR CONTROLLING NOISE, SHOCK & VIBRATION

SIZE	CAGE CODE
<b>B</b>	
DO NOT SCALE DRAWING	

AR	ELASTOMER	K28-4		4
2	MK28M8	MK28M8		3
2	MK35018T	MK35018T		2
	K28	K28		1
QTY.	DESCRIPTION	PART NUMBER	MATERIAL OR NOTES	ITEM
TITLE: K28 SERIES VIBRO-INSULATOR WWW.KARMAN.COM				
DWG. NO. K28			REV 1	
SCALE: 1:1		WEIGHT: 3.6 OZ.	SHEET 1 OF 1	