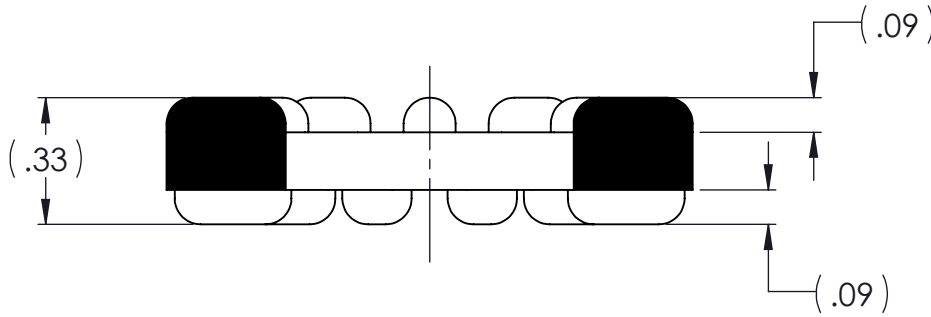
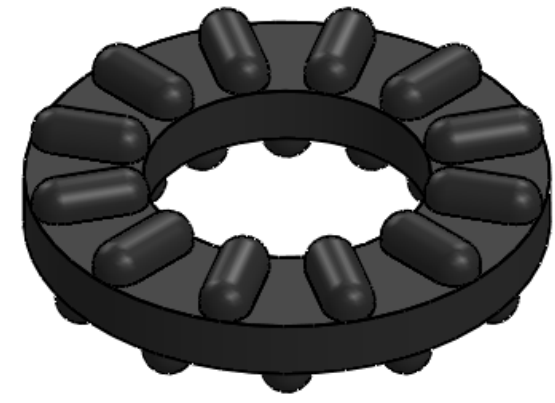
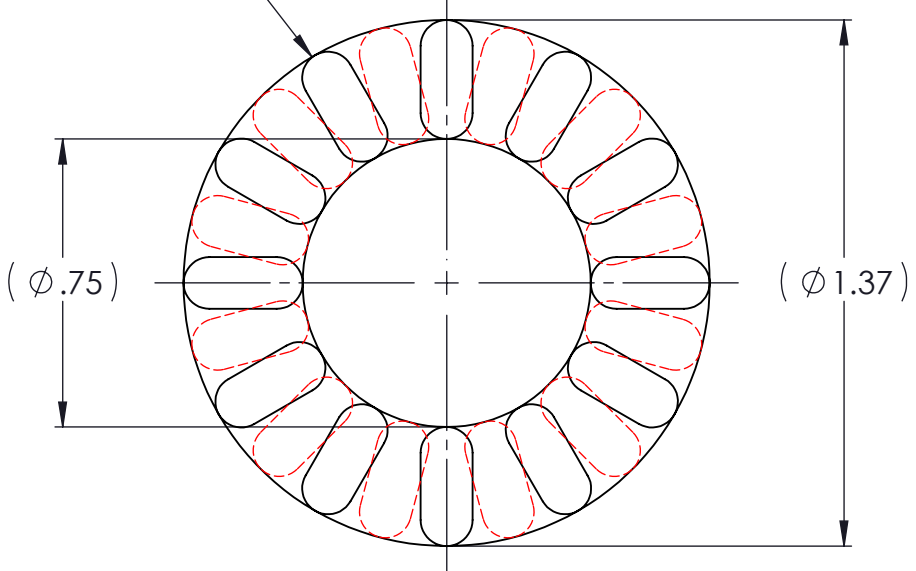


REVISIONS			
REV.	DESCRIPTION	DATE	APPROVED
1	INITIAL RELEASE OF DRAWING	11/3/2014	BS
2	REVISE FINGER NOTE	11/19/2014	BS

12 FINGERS EACH
SIDE OUT OF PHASE

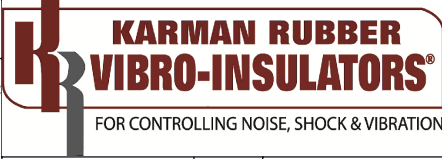


NOTES:

- 1 MATERIAL: ELASTOMER AND DUROMETER OF 30, 40, 50, 60 OR 70 TO BE SPECIFIED.
- 2 ALL DIMENSIONS ARE REFERENCE.

PROPRIETARY AND CONFIDENTIAL THE INFORMATION CONTAINED IN THIS DRAWING IS THE SOLE PROPERTY OF KARMAN RUBBER. ANY REPRODUCTION IN PART OR AS A WHOLE WITHOUT THE WRITTEN PERMISSION OF KARMAN RUBBER IS PROHIBITED.	SIGNATURE		DATE
	DRAWN	B. SENEAL	11/03/2014
	CHECK	S. BROWN	11/03/2014
	ENGR	B. SENEAL	11/03/2014
	QA		
	STRESS		
APPR			

UNLESS OTHERWISE SPECIFIED:
DIMENSIONS ARE IN INCHES
TOLERANCES:
.X =
.XX = ± 0.031
.XXX =
ANGLES = ± 1°
INTERPRET GEOMETRIC TOLERANCING PER: ASME Y14.5M-1994



TITLE: K1130B SERIES VIBRO-INSULATOR
WWW.KARMAN.COM

QTY.	DESCRIPTION	PART NUMBER	MATERIAL OR NOTES	ITEM
	K1130B	K1130B		1

SIZE	CAGE CODE	DWG. NO.	REV
B		K1130B	2

DO NOT SCALE DRAWING SCALE: 2:1 WEIGHT: N/A SHEET 1 OF 1